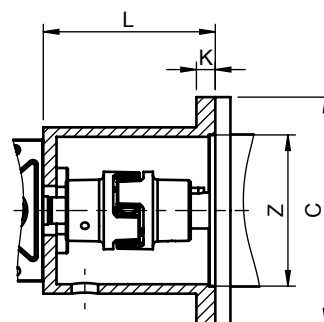
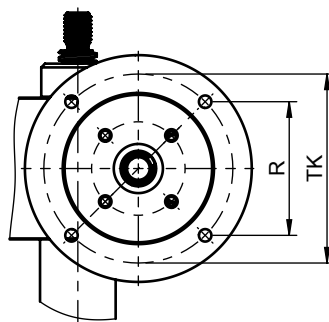


Drive Technology

Motor adapter flanges MG for 3-phase motors

Motor adapter flanges are used to mount motors to worm gear screw jacks and house the coupling for connecting the motor to the drive shaft. When ordering, please specify the side to which the motor adapter flange is to be attached (A or B).



Dimensions									
Size	Motor	Type MG/ZF ¹⁾	Dimensions [mm]						cpl. size cpl. material shore hardness (shaft-Ø Muli) / (shaft-Ø Motor) ⁴⁾
			C	TK	Z	L	R	K	
MULI 0	71	MG	120	100	80	66	70,7	10	RA14 AL-H 92 (1.0-Ø9x11) / (1.0-Ø14x11)
	80					RA14 AL-H 92 (1.0-Ø9x11) / (1.0-Ø19x11)			
MULI 1	71	MG	120	100	80	80	70,7	10	RA19 AL-D 92 (1.0-Ø10x25) / (1.0-Ø14x25)
	80					RA19 AL-D 92 (1.0-Ø10x25) / (1.0-Ø19x25)			
MULI 2	71	MG	120	100	80	80	70,7	10	RA19 AL-D 92 (1.0-Ø14x25) / (1.0-Ø14x25)
	80					91			RA19 AL-D 92 (1.0-Ø14x25) / (1.0-Ø19x25)
	90					160			130
MULI 3	71	MG	120	100	80	90	70,7	10	RA19 AL-D 92 (1.0-Ø16x25) / (1.0-Ø14x25)
	80					101			RA19 AL-D 92 (1.0-Ø16x25) / (1.0-Ø19x25)
	90					160			130
MULI 4	100 / 112	MG + ZF	200	165	130	131	116,7	29	RA28 AL-D 92 (1.0-Ø16x35) / (1.0-Ø28x35)
	80	MG	120	100	80	103	70,7	12	RA24 AL-D 92 (1.0-Ø20x30) / (1.0-Ø19x30)
	90		160	130	110	116	92	15	RA24 AL-D 92 (1.0-Ø20x30) / (1.0-Ø24x30)
MULI 5	100 / 112	MG	200	165	130	131	116,7	29	RA28 AL-D 92 (1.0-Ø20x35) / (1.0-Ø28x35)
	90		160	130	110	136	92	15	RA28 AL-D 92 (1.0-Ø25x35) / (1.0-Ø24x35)
			200	165	130	152	116,7	16	RA28 AL-D 92 (1.0-Ø25x35) / (1.0-Ø28x35)

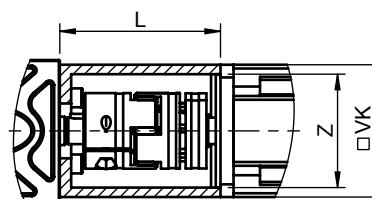
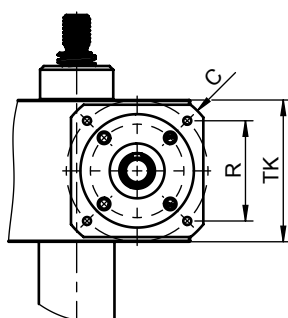
¹⁾ MG = Motor adapter flange / ZF = Intermediate flange.
²⁾ When ordering, please specify the diameter for connecting the coupling half shell to the motor shaft.
³⁾ Table show standard range. Custom motor adapter flanges upon request. Design and dimensions may change.
⁴⁾ Standard is coupling version 1.0 with key, spider made of polyurethane in hardness Shore A 92 (yellow).



Drive Technology

Motor adapter flanges MG for 3-servo motors

Motor adapter flanges are used to mount motors to worm gear screw jacks and house the coupling for connecting the motor to the drive shaft. When ordering, please specify the side to which the motor adapter flange is to be attached (A or B).



Dimensions									
Size	Motor	Type MG/ZF ¹⁾	Dimensions [mm]						cpl. size cpl. material shore hardness (shaft-Ø Muli) / (shaft-Ø Motor) ⁴⁾
			VK	C	TK	Z	L	R	
MULI 0	AKM2	MG	58	70	63	40	60	44,5	AGS14 98 (2.1AL-Ø9x11) / (6.0ST-Ø9x18.5)
MULI 1	AKM2	MG	58	80	63	40	57	44,5	AGS14 98 (2.1AL-Ø10x11) / (6.0ST-Ø9x18.5)
	AKM3		70	90	75	60	70	53	AGS19 98 (2.1AL-Ø10x25) / (6.0ST-Ø14x25)
MULI 2	AKM2	MG	58	80	63	40	61	44,5	AGS14 98 (2.1AL-Ø14x11) / (6.0ST-Ø9x18.5)
	AKM3		70	90	75	60	85	53	AGS19 98 (2.1AL-Ø14x25) / (6.0ST-Ø14x25)
	AKM4		84	110	100	80	84	70,7	AGS19 98 (2.1AL-Ø14x25) / (6.0ST-Ø19x25)
MULI 3	AKM3	MG	70	90	75	60	91	53	AGS19 98 (2.1AL-Ø16x25) / (6.0ST-Ø14x25)
	AKM4		84	110	100	80	101	70,7	AGS19 98 (2.1AL-Ø16x25) / (6.0ST-Ø19x25)
MULI 4	AKM4	MG	84	110	100	80	104	70,7	AGS19 98 (2.1AL-Ø20x25) / (6.0ST-Ø19x25)
	AKM5		112	150	130	110	116	91,9	AGS24 98 (2.6AL-Ø20x30) / (6.0ST-Ø24x30)
MULI 5	AKM5	MG	112	150	130	110	136	91,9	AGS24 98 (2.6AL-Ø25x30) / (6.0ST-Ø24x30)
	AKM6		138	180	165	130	145	116,7	AGS28 98 (2.6AL-Ø25x35) / (6.0ST-Ø32x35)
	AKM7		188	230	215	180	168	152	AGS28 98 (2.6AL-Ø25x35) / (6.0ST-Ø38x35)

¹⁾ MG = Motor adapter flange / ZF = Intermediate flange.

²⁾ When ordering, please specify the diameter for connecting the coupling half shell to the motor shaft.

³⁾ Table shows standard range. Custom motor adapter flanges upon request. Design and dimensions may change.

⁴⁾ Standard is coupling version 2.1AL = 1 slot with key / 2.6AL = 2 slots with key / 6.0ST = tension ring, spider made of polyurethane in hardness Shore A 98 (red).